

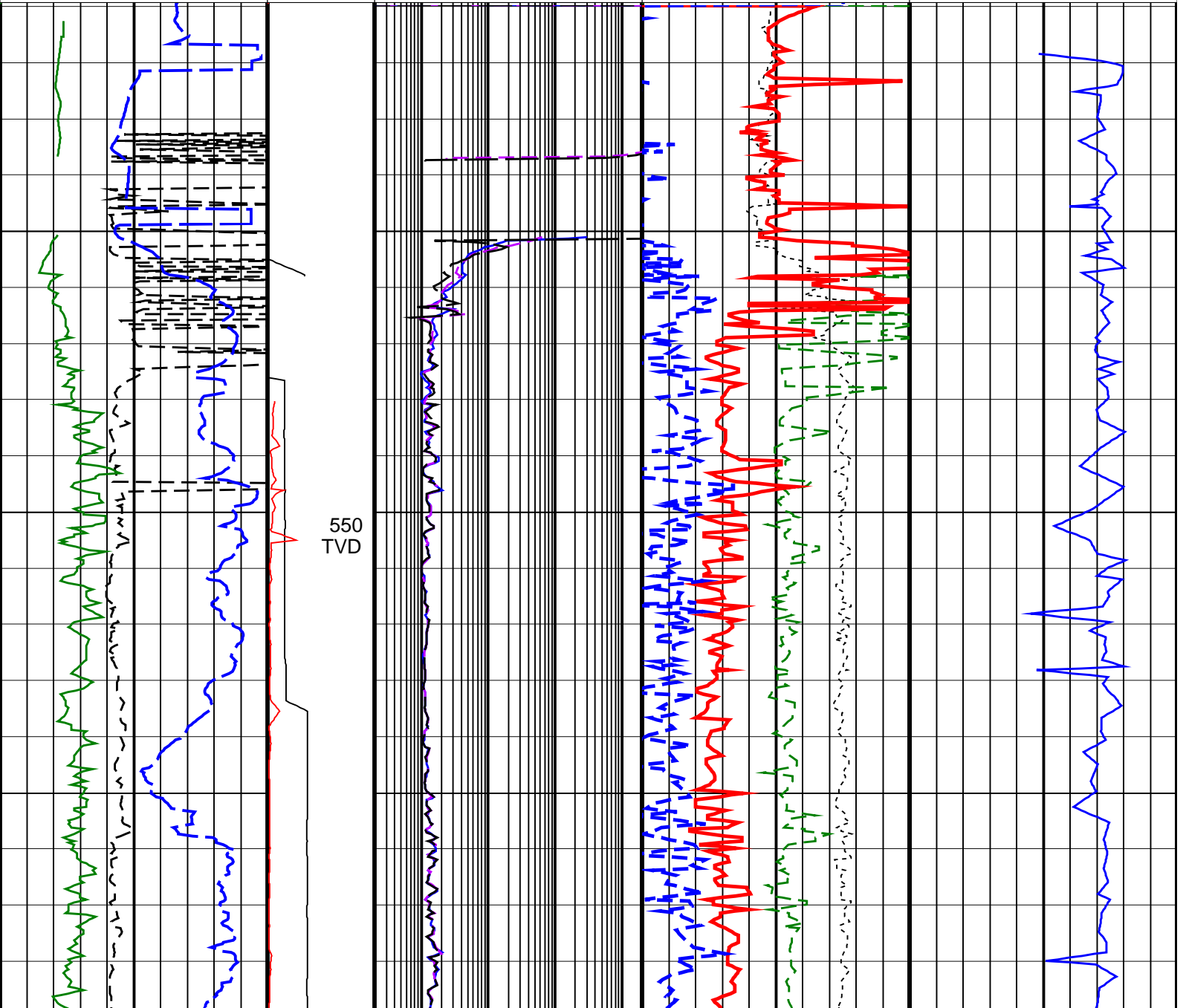
CBA-A14b LWD VISION RT 500TVD

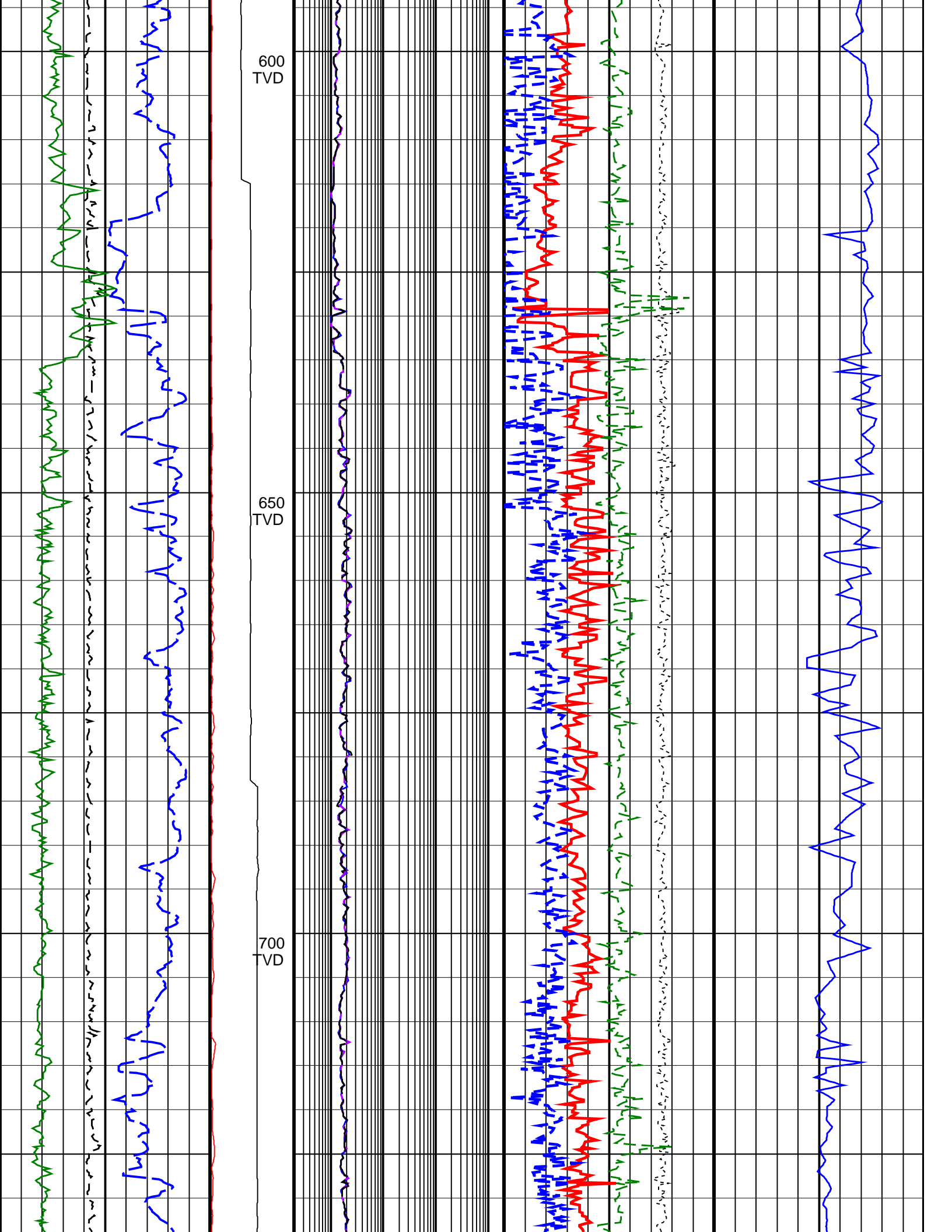
Format: VISION SERVICE RT 500TVD

Vertical Scale: 1:500

Graphics File Created: 09-Apr-2009 03:00

		<u>Thermal Neutron Porosity, Real-Time (TNPH_ADN_RT)</u> 45 (PU) -15	
<u>ARC Gamma Ray, Real-Time (ARC_GR_RT)</u> 0 (GAPI) 200	ARC BHCorr Phase-Shift Resistivity 40-in. at 2 MHz, Real-Time (P40H_RT) 0.2 (OHMM) 2000	Bulk Density, Bottom, Real-Time Computed Downhole (ROBB_DH_RT) 1.85 (G/C3) 2.85	
Average Borehole Diameter, Real-Time (ADIA_ADN_RT) 6 (IN) 16	MWD Collar RPM (CRPM_RT) (RPM) 0 250	ARC BHCorr Phase-Shift Resistivity 28-in. at 2 MHz, Real-Time (P28H_RT) 0.2 (OHMM) 2000	Photoelectric Factor, Bottom, Real-Time (PEB_RT) 0 (----) 10
<u>ROP*5 (ROP5)</u> 200 (M/HR) 0	PKPK_RPM (Stick_RT) (RPM) 0 500	ARC BHCorr Phase-Shift Resistivity 16-in. at 2 MHz, Real-Time (P16H_RT) 0.2 (OHMM) 2000	Bulk Density Correction, Bottom, Real-Time Computed Downhole (DRHB_DH_RT) -0.75 (G/C3) 0.25
			<u>Delta-T Compressional, Real-Time (DTCO_RT)</u> 600 (US/M) 100

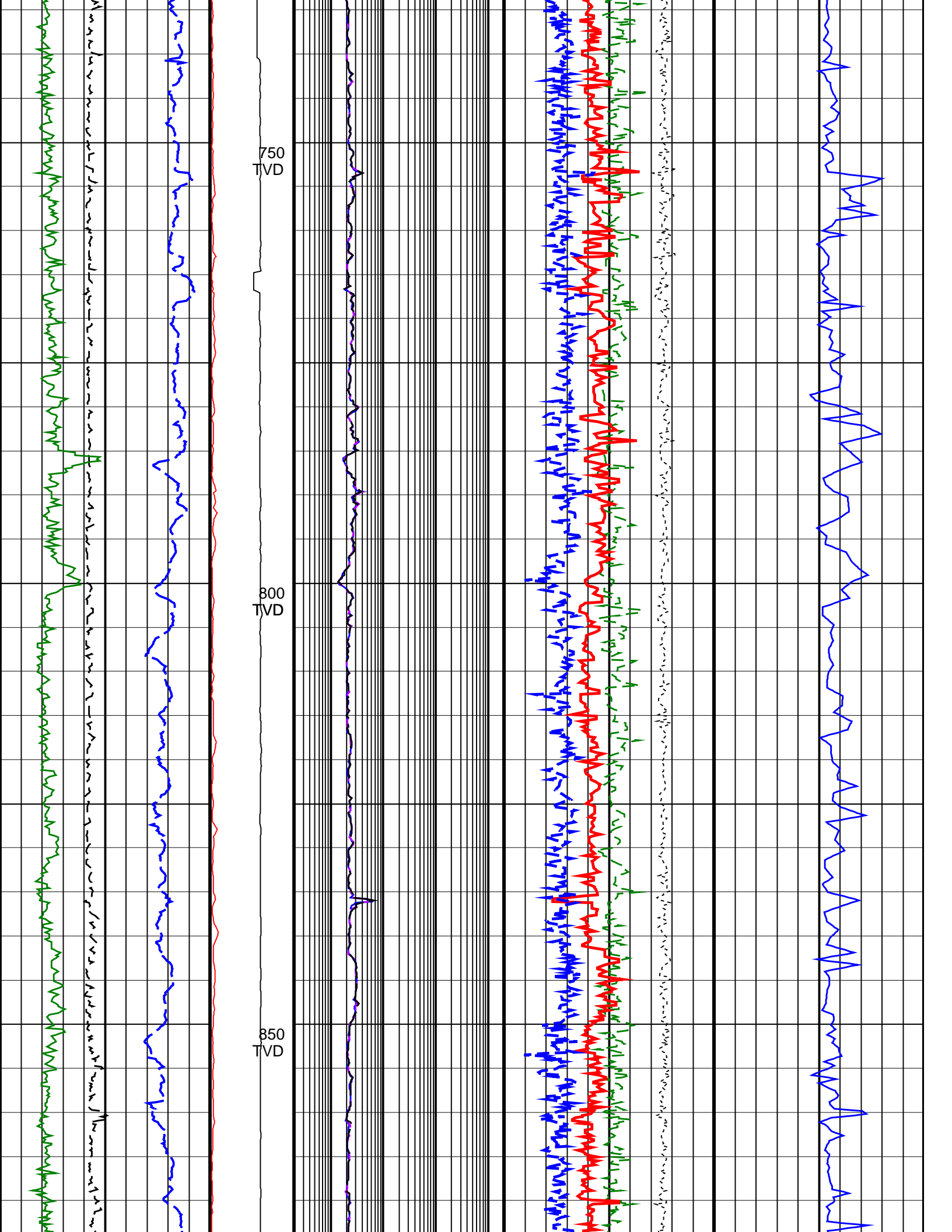


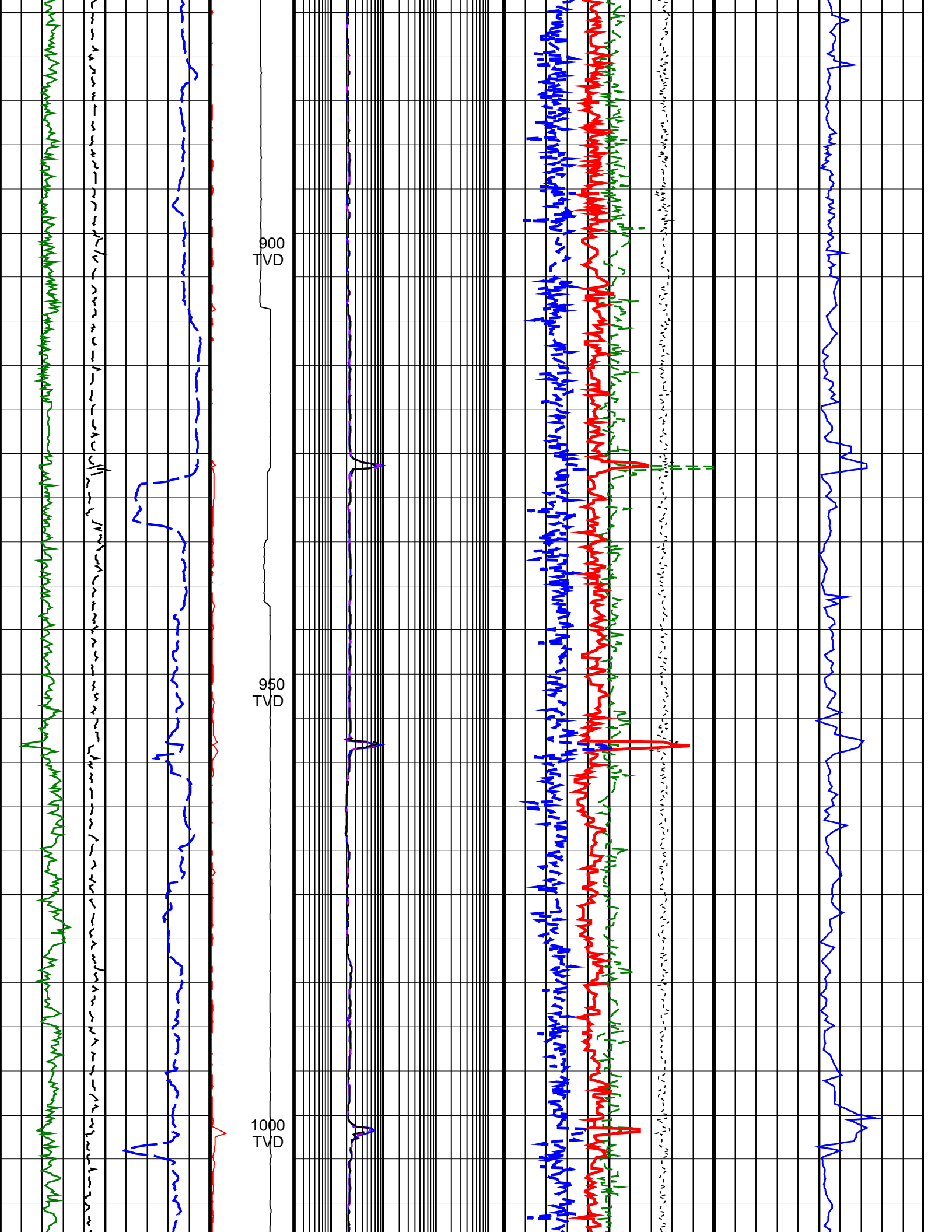


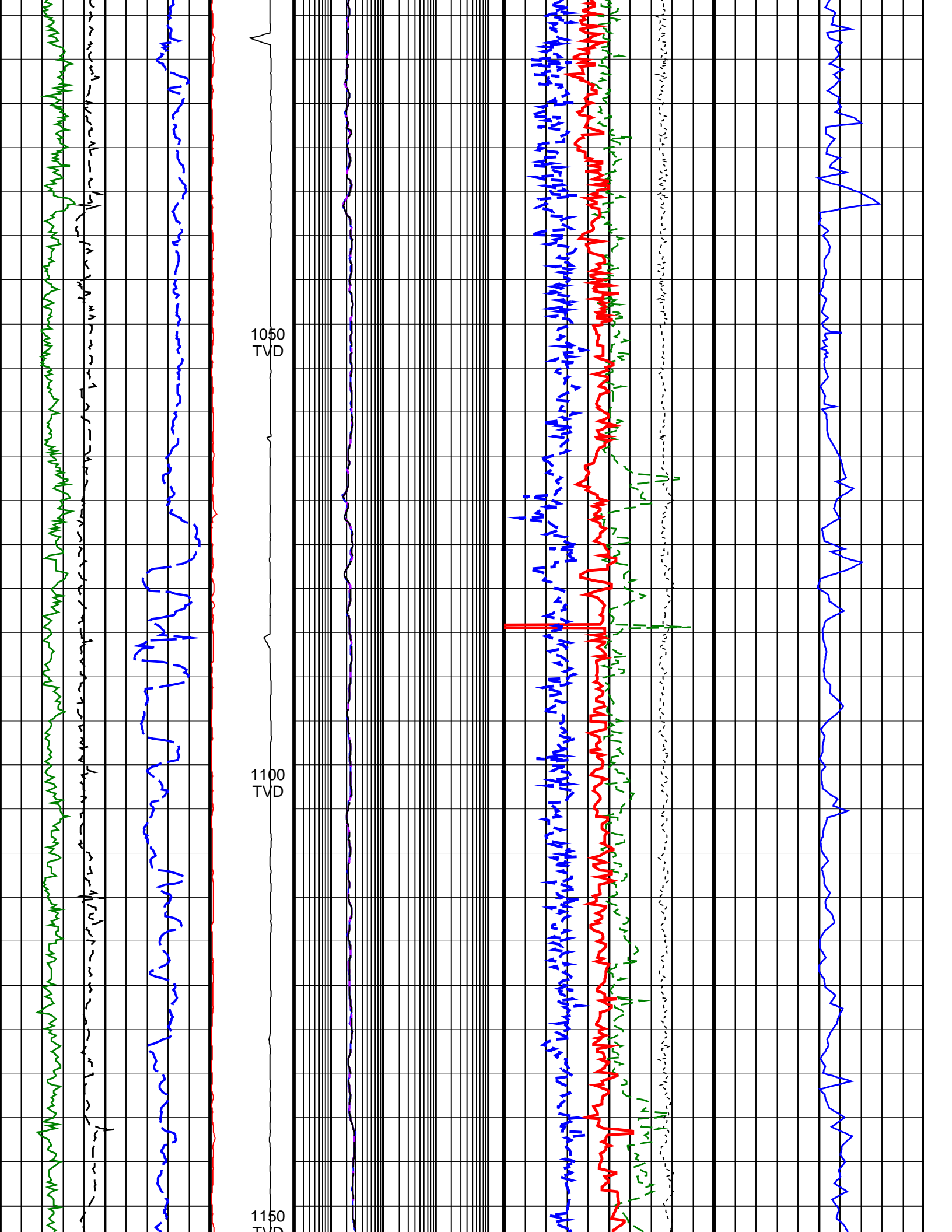
600
TVD

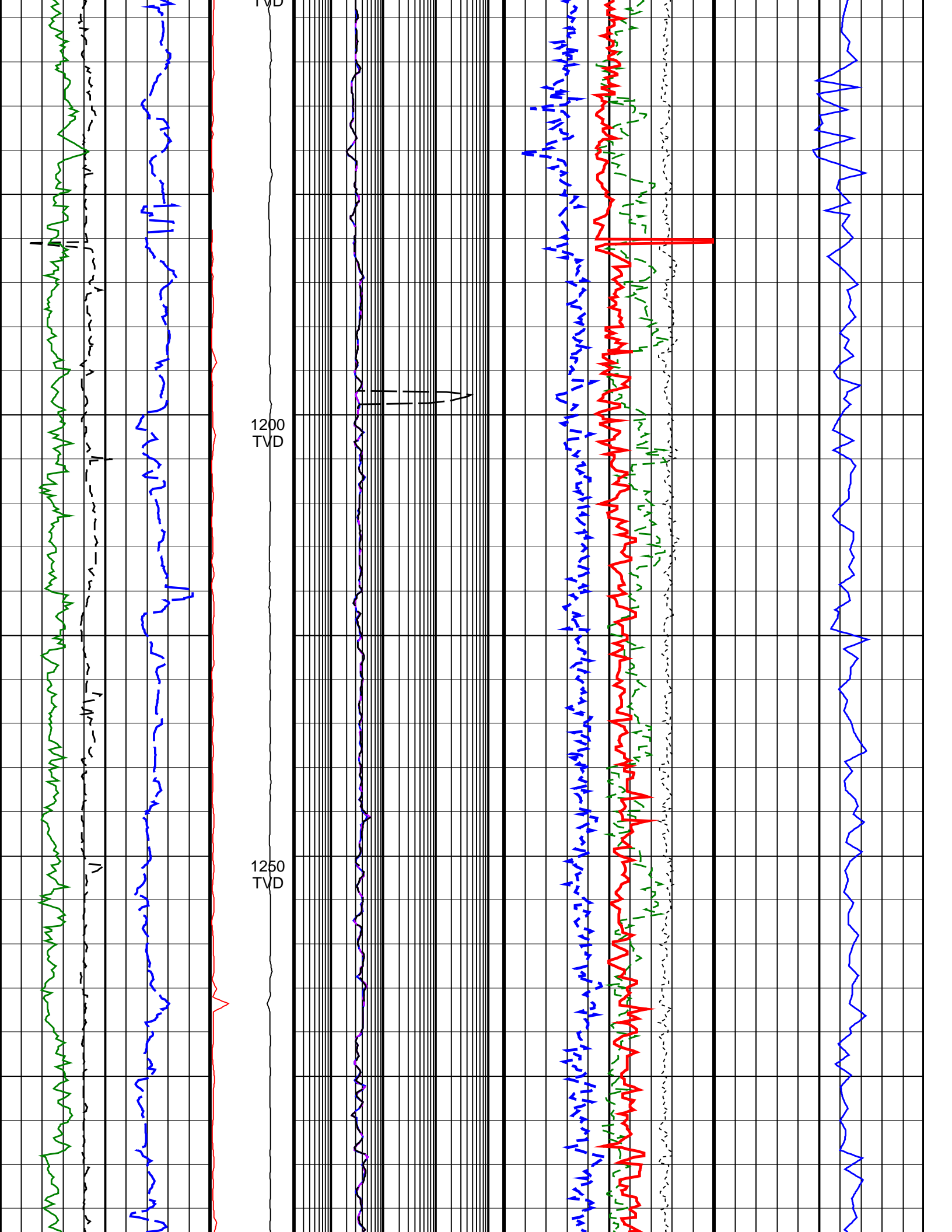
650
TVD

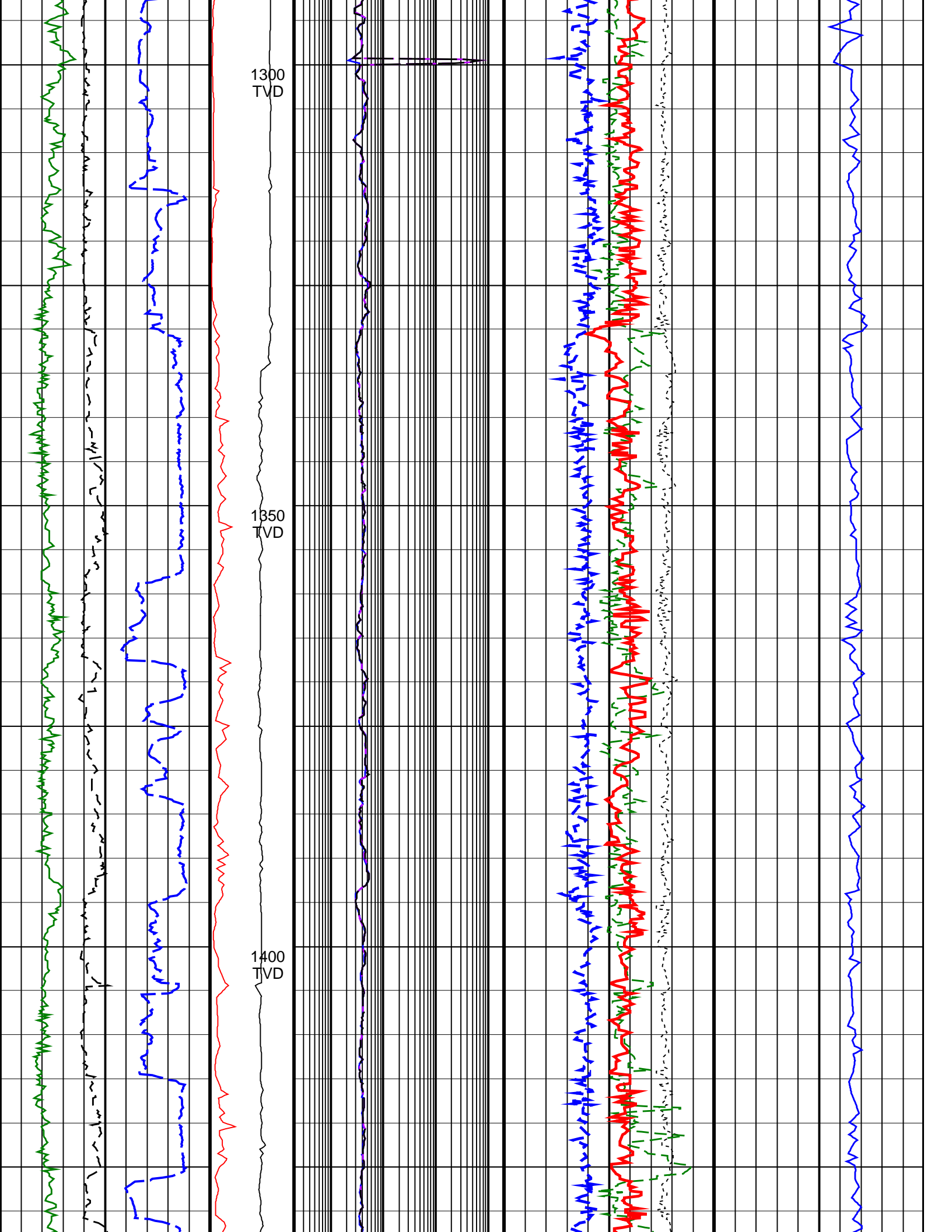
700
TVD

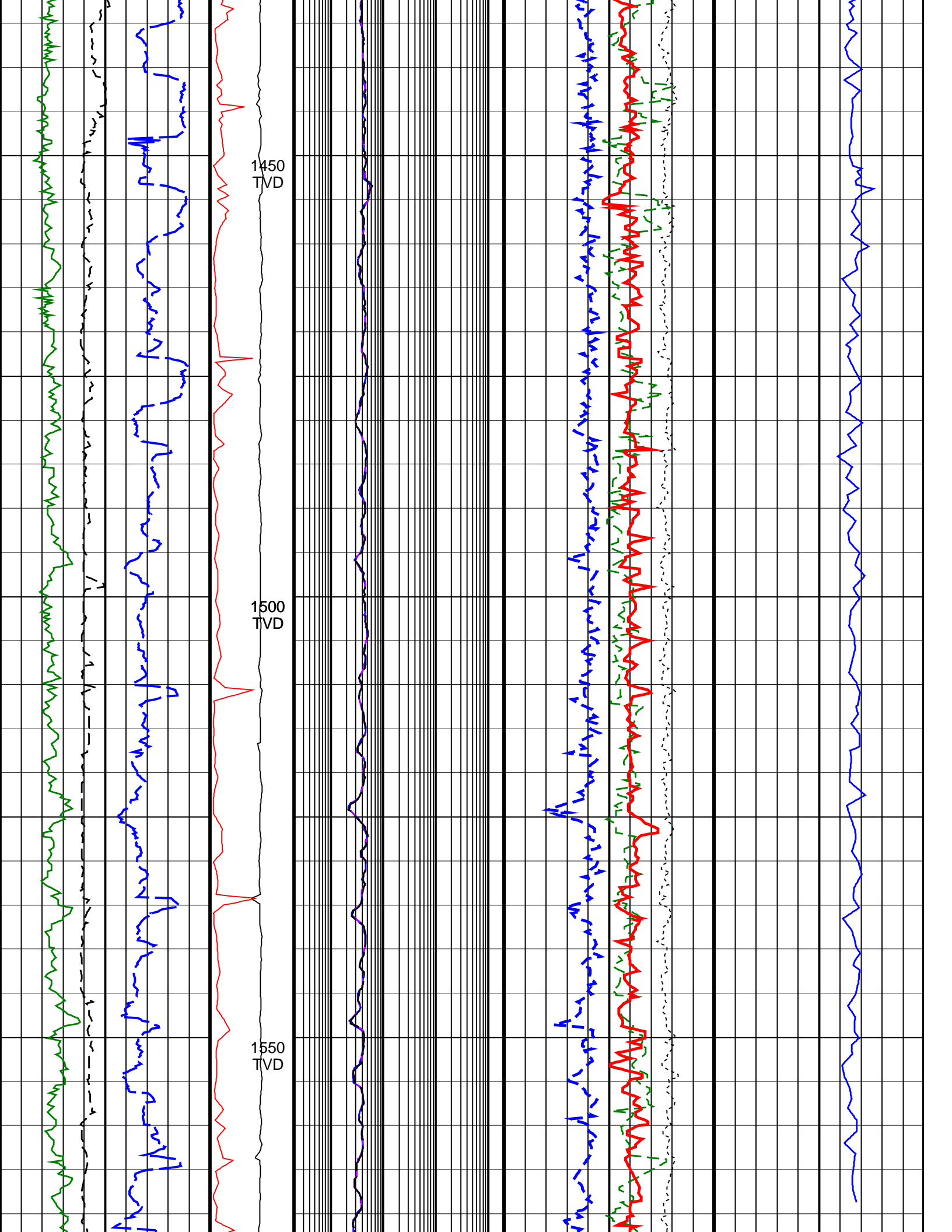


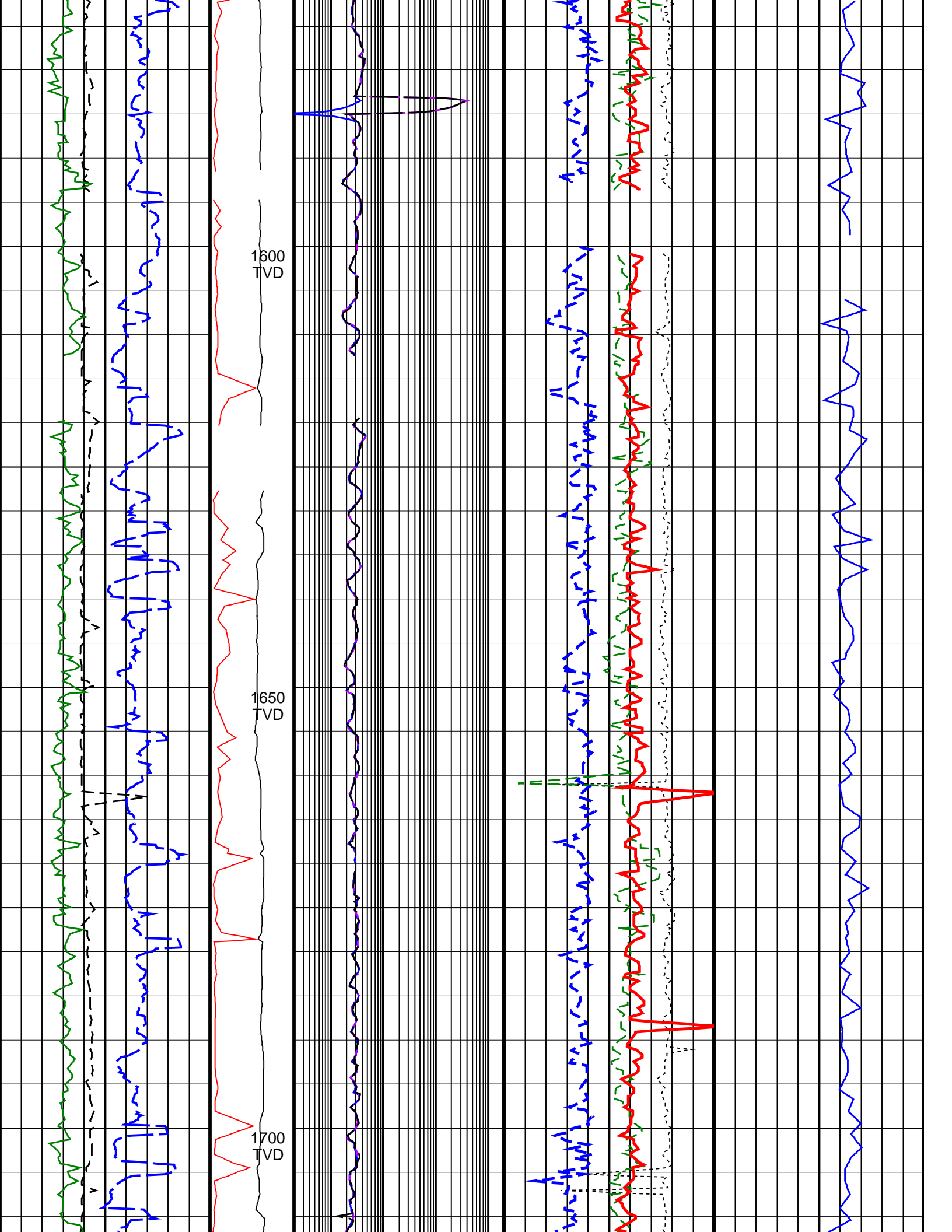


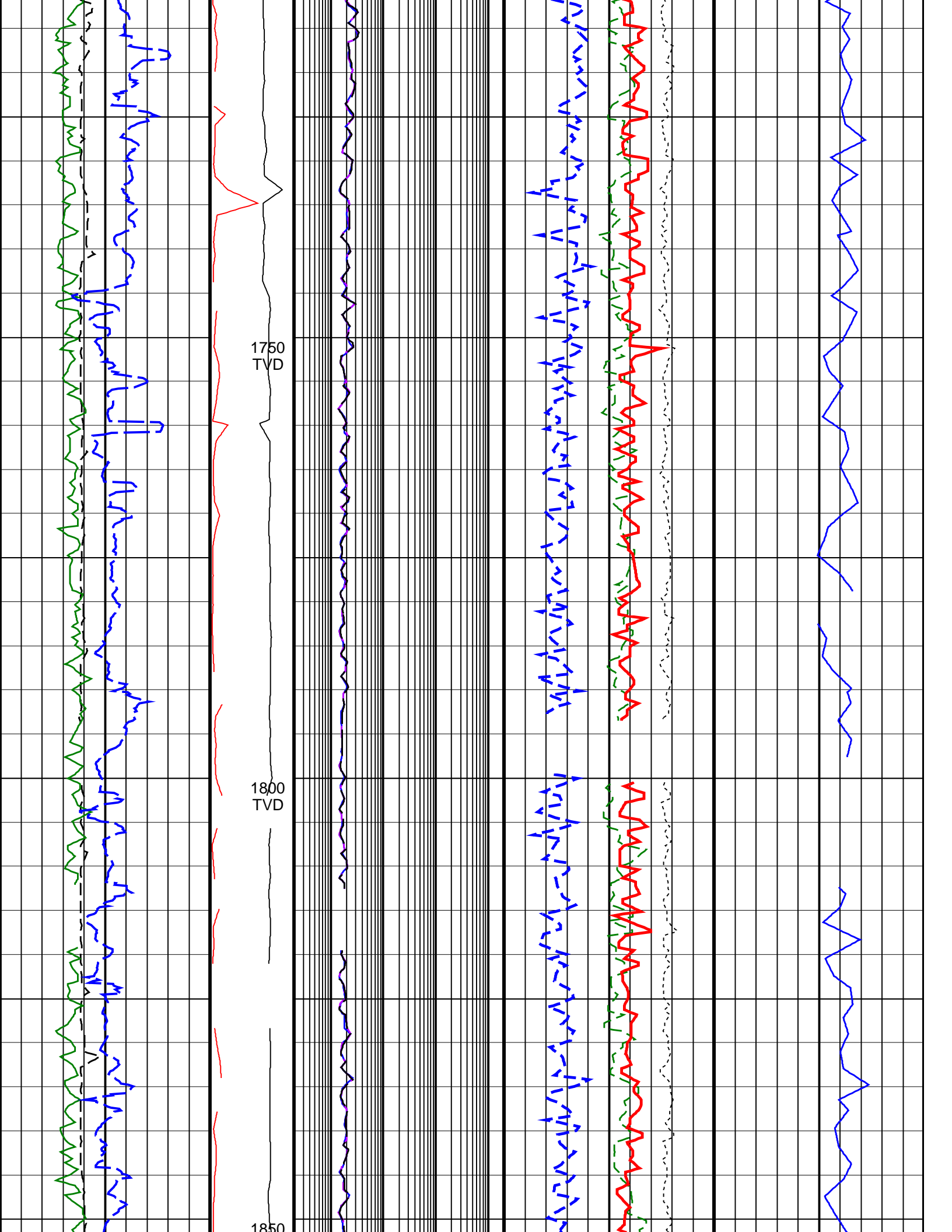


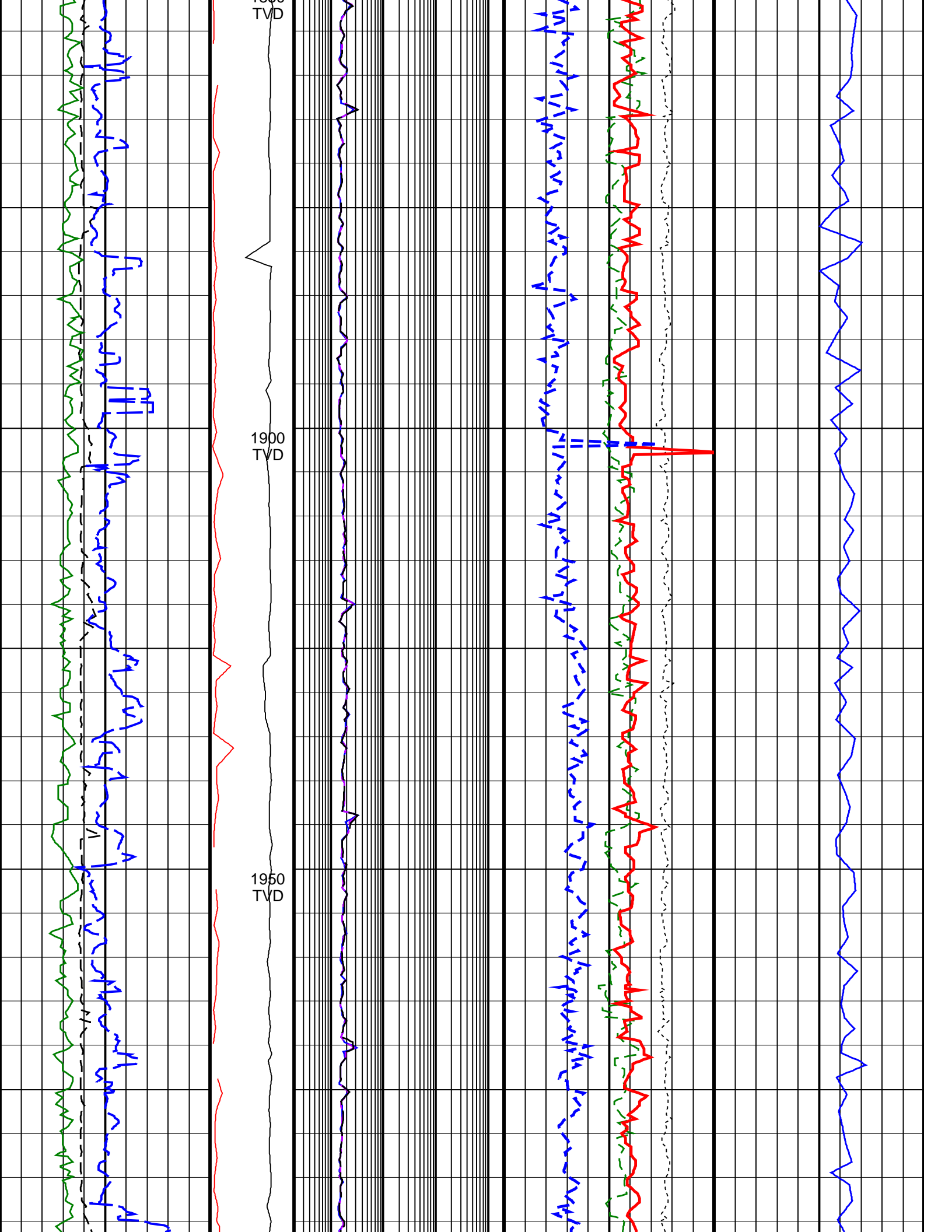


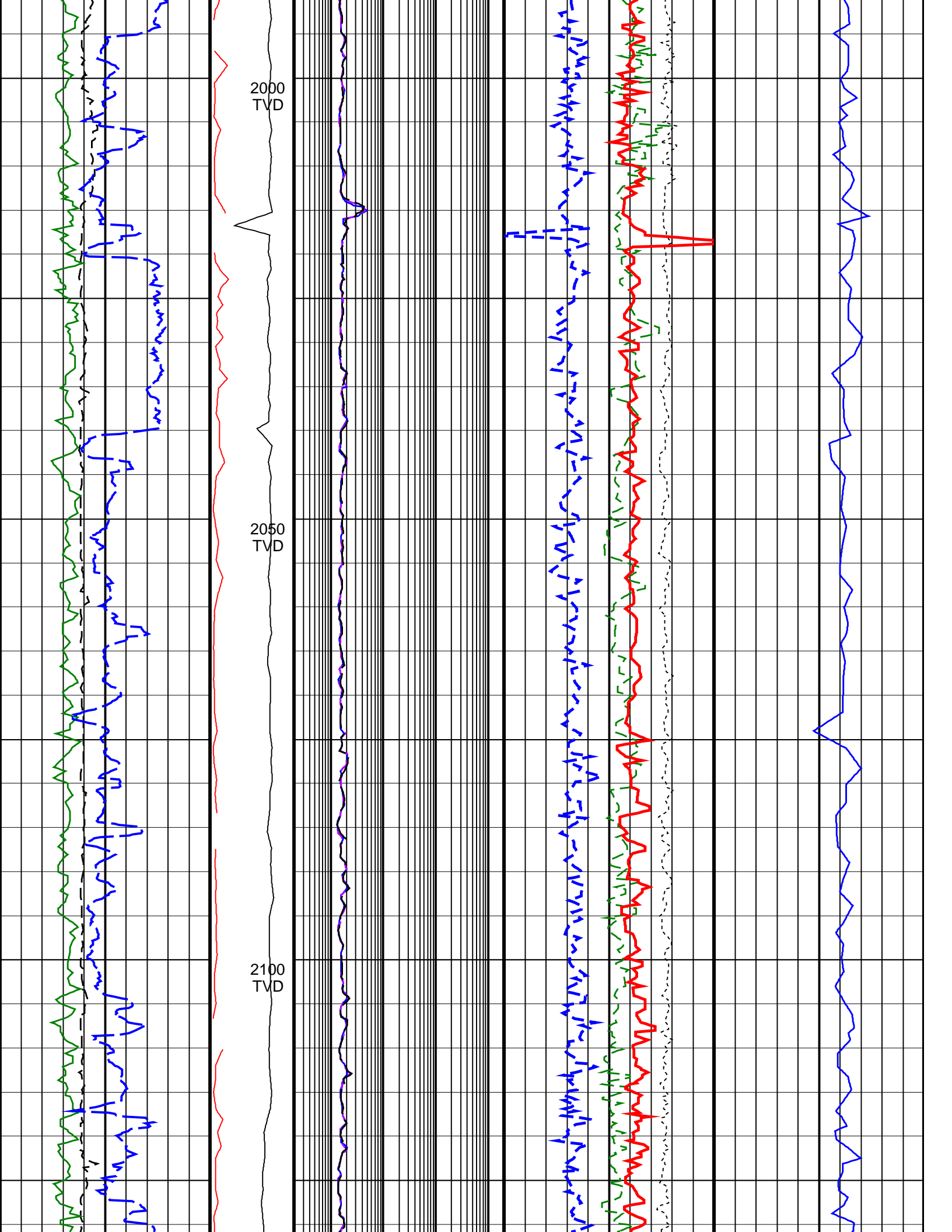


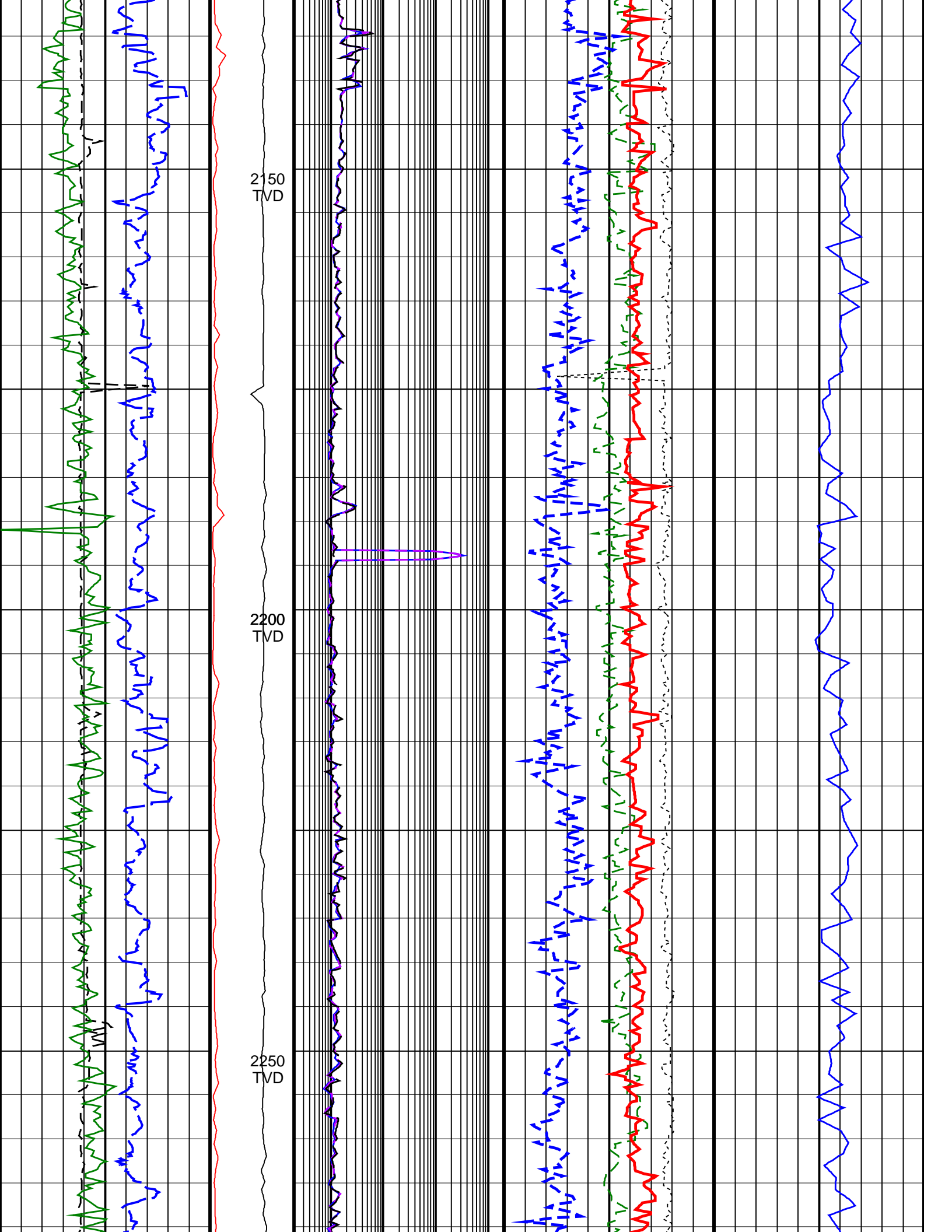


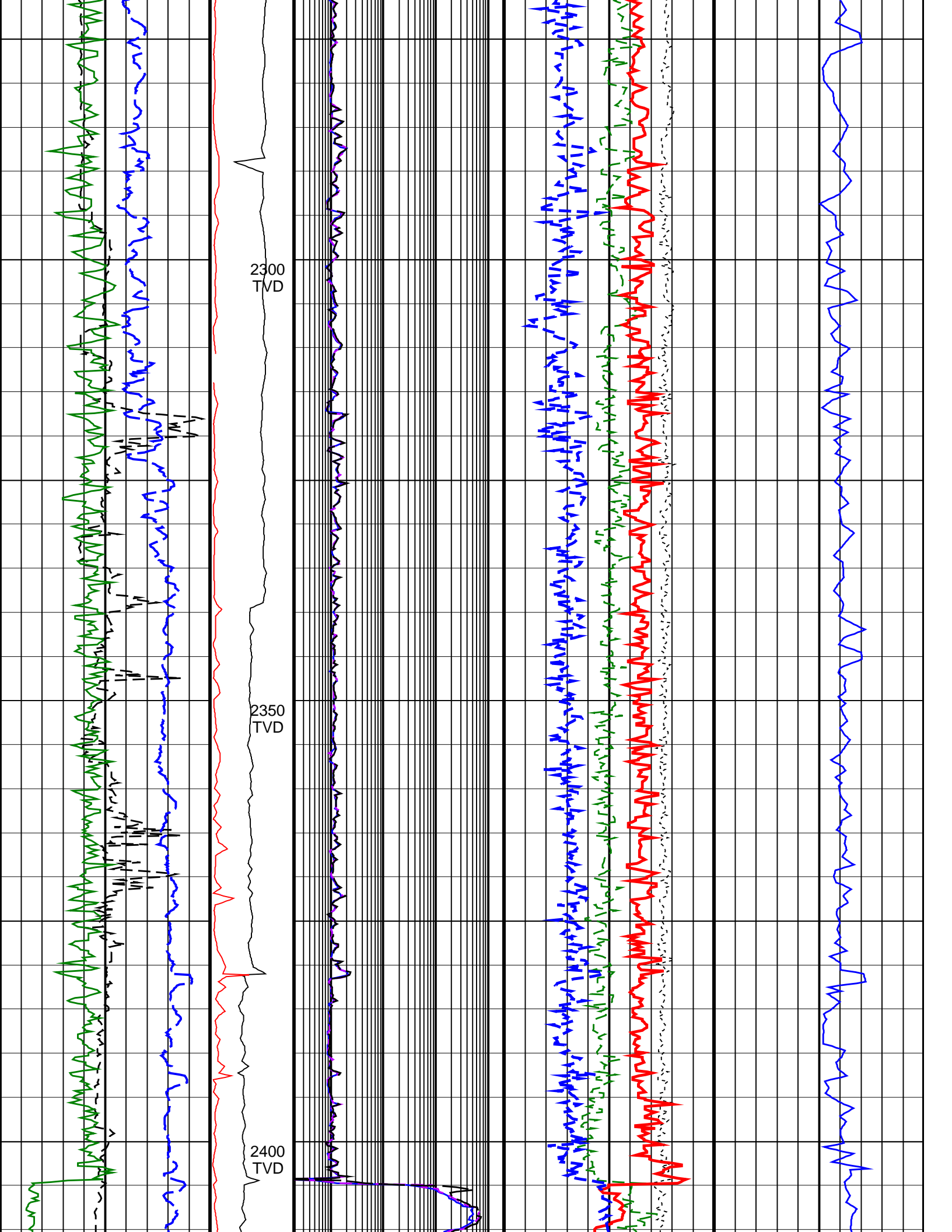


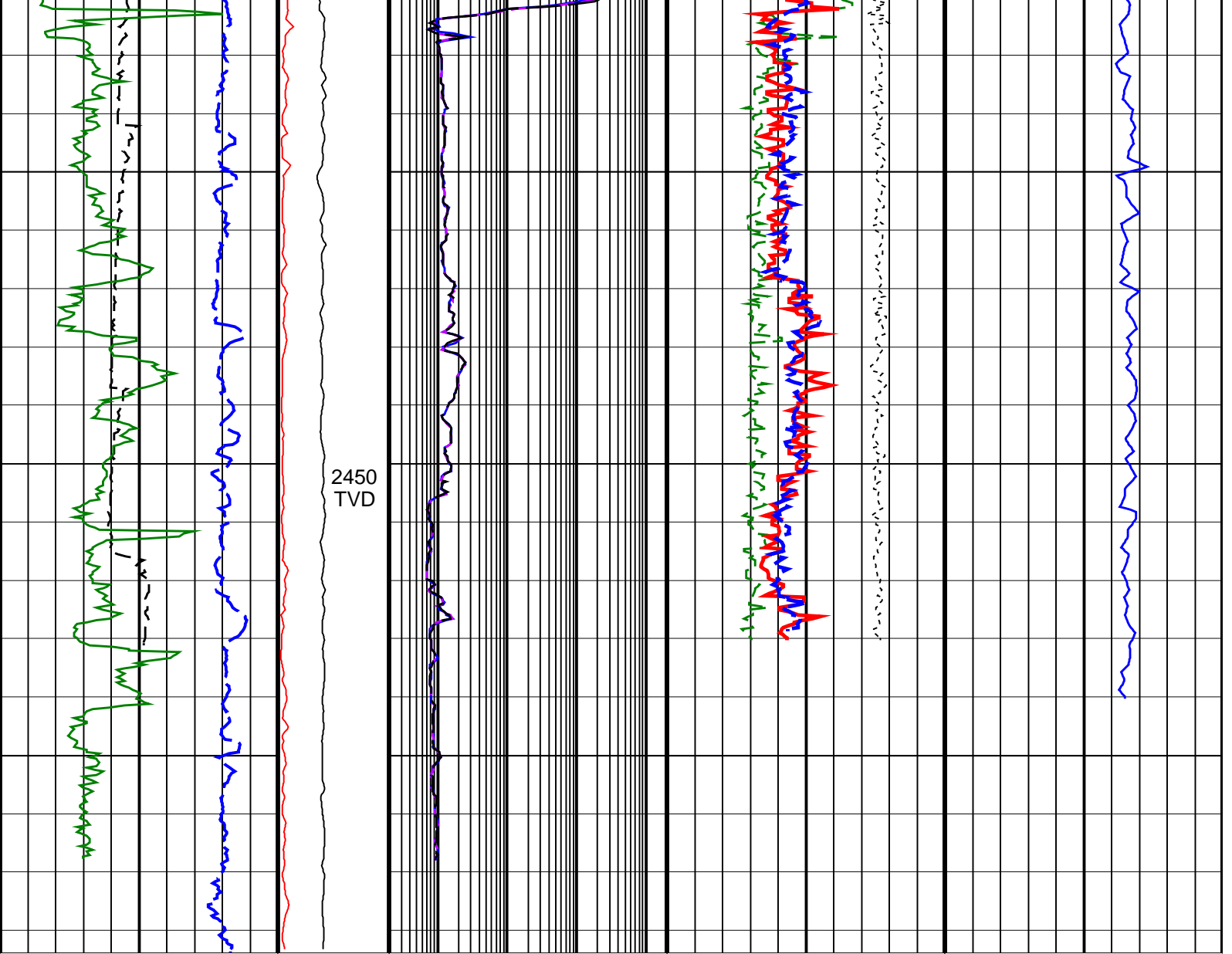












<p>ROP*5 (ROP5) (M/HR)</p> <p>200 0</p>	<p>PKPK_RPM (Stick_RT) (RPM)</p> <p>0 500</p>	<p>ARC BHCorr Phase-Shift Resistivity 16-in. at 2 MHz, Real-Time (P16H_RT) (OHMM)</p> <p>0.2 2000</p>	<p>Bulk Density Correction, Bottom, Real-Time Computed Downhole (DRHB_DH_RT) (G/C3)</p> <p>-0.75 0.25</p>	<p>Delta-T Compressional, Real-Time (DTCO_RT) (US/M)</p> <p>600 100</p>
<p>Average Borehole Diameter, Real-Time (ADIA_ADN_RT) (IN)</p> <p>6 16</p>	<p>MWD Collar RPM (CRPM_RT) (RPM)</p> <p>0 250</p>	<p>ARC BHCorr Phase-Shift Resistivity 28-in. at 2 MHz, Real-Time (P28H_RT) (OHMM)</p> <p>0.2 2000</p>	<p>Photoelectric Factor, Bottom, Real-Time (PEB_RT) (----</p> <p>0 10</p>	
<p>ARC Gamma Ray, Real-Time (ARC_GR_RT) (GAPI)</p> <p>0 200</p>		<p>ARC BHCorr Phase-Shift Resistivity 40-in. at 2 MHz, Real-Time (P40H_RT) (OHMM)</p> <p>0.2 2000</p>	<p>Bulk Density, Bottom, Real-Time Computed Downhole (ROBB_DH_RT) (G/C3)</p> <p>1.85 2.85</p>	
			<p>Thermal Neutron Porosity, Real-Time (TNPH_ADN_RT) (PU)</p> <p>45 -15</p>	